



**VA1maz**

---

[micul-fermier.ro](http://micul-fermier.ro)



## AZ-ES001 WELDING MACHINE TB250B

Product type: Inverters  
/Welding machines.

Display:	Analogic
Electric current intensity:	20-180 A
Working voltage:	65 V
Min. intensity at max. value network voltage:	35.8 A
Min. intensity at effective max. value network voltage:	27.7 A
Waterproof class:	IP21S
Welding type:	With MMA electric arc
Welding cables:	200 A
Types of electrodes:	Basic and supertit
Electrode support cable:	1.6 m x 10 m
Ground cable:	1.2 m x 10 m
Operating cycle:	60%
Efficiency:	85%
Power factor:	93%
Connectors:	10-25
Electrode diameter:	1.6 - 5.0 mm



## AZ-ES002 WELDING MACHINE MMA 250

Product type: Inverters  
/Welding machines.

Display:	Analogic
Electric current intensity:	54-180 A
Working voltage:	65 V
Min. intensity at max. value network voltage:	18.7 A
Min. intensity at effective max. value network voltage:	10.2A
Waterproof class:	IP21S
Welding type:	With MMA electric arc
Welding cables:	200 A
Types of electrodes:	Basic and supertit
Electrode support cable:	1.6 m x 10 m
Ground cable:	1.2 m x 10 m
Operating cycle:	60%
Efficiency:	80%
Power factor:	93%
Connectors:	10-25
Electrode diameter:	1.6 - 5.0 mm



## AZ-ES003 DIGITAL WELDING MACHINE MMA 250

Product type: Inverters  
/Welding machines.

Display:	Digital
Electric current intensity:	30-250 A
Working voltage:	65 V
Min. intensity at max. value network voltage:	58.4 A
Min. intensity at effective max. value network voltage:	45.2A
Waterproof class:	IP21S
Welding type:	With MMA electric arc
Welding cables:	300 A
Types of electrodes:	1.6 m x 10 m
Electrode support cable:	Basic and supertit
Ground cable:	1.2 m x 10 m
Operating cycle:	60%
Efficiency:	80%
Power factor:	93%
Connectors:	10-25
Electrode diameter:	1.6 - 5.0 mm



## AZ-ES004 DIGITAL WELDING MACHINE MMA 270

Product type: Inverters  
/Welding machines.

Display:	Digital
Electric current intensity:	30-270 A
Working voltage:	65 V
Min. intensity at max. value network voltage:	53.5 A
Min. intensity at effective max. value network voltage:	41.4A
Waterproof class:	F
Welding type:	300 A
Welding cables:	With MMA electric arc
Types of electrodes:	1.6 m x 10 m
Electrode support cable:	Basic and supertit
Ground cable:	1.2 m x 10 m
Operating cycle:	50%
Efficiency:	80%
Power factor:	93%
Connectors:	10-25
Electrode diameter:	1.6 - 5.0 mm



### AZ-ES005

#### DIGITAL WELDING MACHINE MMA 300

Product type: Inverters / Welding machines.



### AZ-ES006

#### DIGITAL WELDING MACHINE TB-250S

Product type: Inverters / Welding machines.



### AZ-ES013

#### WELDING MACHINE MIG 200

Product type: Inverters / Welding machines.



### AZ-ES014

#### WELDING MACHINE MIG-285

Product type: Inverters / Welding machines.



### AZ-ES015

#### WELDING MACHINE MIG-308

Product type: Inverters / Welding machines.



### AZ-ES016

#### WELDING MACHINE MIG-328

Product type: Inverters / Welding machines.

Display:	Digital
Electric current intensity:	20-300 A
Working voltage:	60 V
Min. intensity at max. value network voltage:	32 A
Min. intensity at effective max. value network voltage:	1.7 A
Welding cables:	300 A
Welding type:	With MMA electric arc
Electrode support cable:	1.6 m x 10 m
Ground cable:	1.2 m x 10 m
Operating cycle/Efficiency:	55% / 80%
Power factor:	93%
Connectors:	10-25
Electrode diameter:	1.6 - 5.0 mm
Types of electrodes:	Basic and supertit

Display:	Digital
Electric current intensity:	20-180 A
Working voltage:	65 V
Min. intensity at max. value network voltage:	35.8 A
Min. intensity at effective max. value network voltage:	27.7A
Welding cables:	200 A
Welding type:	With MMA electric arc
Electrode support cable:	1.6 m x 10 m
Ground cable:	1.2 m x 10 m
Operating cycle/Efficiency:	60% / 85%
Power factor:	93%
Connectors:	10-25
Electrode diameter:	1.6 - 5.0 mm
Types of electrodes:	Basic and supertit

Display:	Digital
Electric current intensity:	20 - 200 A
Working voltage:	60 V
Cooling system:	Compact axial fan
Ciclu de functionare/Eficianta:	60% / 85%
Factor de putere:	93%
Welding type:	MIG or MMA
Welding wire diameter:	0.6 - 1.0 mm
Electrode diameter:	1.6 - 3.2 mm
Types of electrodes:	All types of coated electrodes
Absorbed power:	7.7 kVA

Display:	Digital
Electric current intensity:	20 - 285 A
Working voltage:	60 V
Cooling system:	Compact axial fan
Ciclu de functionare/Eficianta:	60% / 85%
Factor de putere:	93%
Welding type:	MIG or MMA
Welding wire diameter:	0.6 - 1.2 mm
Electrode diameter:	1.6 - 4.0 mm
Types of electrodes:	All types of coated electrodes
Absorbed power:	14.96 kVA

Display:	Digital
Electric current intensity:	20 - 308 A
Working voltage:	57 V
Cooling system:	Compact axial fan
Ciclu de functionare/Eficianta:	60% / 85%
Factor de putere:	93%
Welding type:	MIG or MMA
Welding wire diameter:	0.6 - 1.2 mm
Electrode diameter:	1.6 - 4.0 mm
Types of electrodes:	All types of coated electrodes
Absorbed power:	17.24 kVA

Display:	Digital
Electric current intensity:	20 - 328 A
Working voltage:	57 V
Cooling system:	Compact axial fan
Ciclu de functionare/Eficianta:	60% / 85%
Factor de putere:	93%
Welding type:	MIG or MMA
Welding wire diameter:	0.6 - 1.2 mm
Electrode diameter:	1.6 - 4.0 mm
Types of electrodes:	All types of coated electrodes
Absorbed power:	18.6 kVA

**Almaz**

2022



## AZ-ES017 WELDING MACHINE WSME-200

Product type: Inverters /  
Welding machines.

Display:	Digital
Electric current intensity:	TIG:10-200A; MMA:20-200A
Cooling system:	Compact axial fan
Output voltage:	70 V
Operating cycle:	75%
Efficiency:	85%
Power factor:	93%
Welding type:	MIG/MMA/TIG
Welding wire diameter:	0.6 - 1.2 mm
Types of electrodes:	All types of coated electrodes
Electrode diameter:	1.6 - 4.0 mm
Absorbed power:	5 kVA



## AZ-ES018 WELDING MACHINE PLASMA 40A

Product type: Inverters /  
Welding machines.

Display:	Digital
Electric current intensity:	PLASMA 15÷40A; CUT: 40PLASMA 15÷40A; CUT: 40
Cooling system:	Compact axial fan
Output voltage:	70 V
Operating cycle:	75%
Efficiency:	85%
Power factor:	93%
Welding type:	MMA or TIG
Welding wire diameter:	0.6 - 1.2 mm
Types of electrodes:	All types of coated electrodes
Electrode diameter:	1.6 - 4.0 mm
Absorbed power:	5 kVA



## AZ-ES010 MMA WELDING INVERTER SP270D 270

Product type: Inverters /  
Welding machines.

Display:	Digital
Electric current intensity:	20 - 270 A
Working voltage:	80V
Welding cables:	300 A
Cooling system:	Compact axial fan
Operating cycle:	60%
Efficiency:	85%
Power factor:	93%
Welding type:	MMA
Technology type	PWM
Electrode diameter:	1.6 - 4.0 mm
Types of electrodes:	All types of electrodes between 1.6-4.0mm



## AZ-ES011 MMA WELDING INVERTER SP285D 285

Product type: Inverters /  
Welding machines.

Display:	Digital
Electric current intensity:	20 - 285 A
Working voltage:	70 V
Welding cables:	300 A
Cooling system:	Compact axial fan
Operating cycle:	75%
Efficiency:	95%
Power factor:	93%
Welding type:	MMA
Technology type	PWM
Electrode diameter:	1.6 - 5.0 mm
Types of electrodes:	All types of electrodes between 1.6-5.0mm



## AZ-ES012 MMA WELDING INVERTER SP285D 285

Product type: Inverters /  
Welding machines.

Display:	Digital
Electric current intensity:	20 - 300 A
Working voltage:	70 V
Welding cables:	300 A
Cooling system:	Compact axial fan
Operating cycle:	60%
Efficiency:	95%
Power factor:	93%
Welding type:	MMA
Technology type	PWM
Electrode diameter:	1.6 - 5.0 mm
Types of electrodes:	All types of electrodes between 1.6 -5.0mm



**AZ-ES033**  
MAGNETIC WELDING  
POSITIONER 25LBS

Product type: Welding accessories.

Material:	Metal
Lifting capacity:	11.3 Kg
Angle:	45°, 90°, 135°
Dimensions:	12 x 8.3 x 1.4 cm



**AZ-ES034**  
MAGNETIC WELDING  
POSITIONER 50LBS

Product type: Welding accessories.

Material:	Metal
Lifting capacity:	22.7 Kg
Angle:	45°, 90°, 135°
Dimensions:	15.5 x 10.3 x 1.7 cm



**AZ-ES035**  
MAGNETIC WELDING  
POSITIONER 75LBS

Product type: Welding accessories.

Material:	Metal
Lifting capacity:	34 Kg
Angle:	45°, 90°, 135°
Dimensions:	19 x 12.3 x 2.45 cm



**AZ-ES036**  
MAGNETIC WELDING  
POSITIONER HEXAGONAL  
SMALL 25LBS

Product type: Welding accessories.

Material:	Metal
Lifting capacity:	11.3 Kg
Angle:	35°, 45°, 75°, 90°, 120°, 135°
Dimensions:	9.6 x 6.5 x 1.4 cm



**AZ-ES037**  
MAGNETIC WELDING  
POSITIONER HEXAGONAL  
MEDIUM 50LBS

Product type: Welding accessories.

Material:	Metal
Lifting capacity:	22.7 Kg
Angle:	35°, 45°, 75°, 90°, 120°, 135°
Dimensions:	12 x 9 x 1.6 cm



**AZ-ES038**  
MAGNETIC WELDING  
POSITIONER HEXAGONAL  
BIG 75LBS

Product type: Welding accessories.

Material:	Metal
Lifting capacity:	34 Kg
Angle:	35°, 45°, 75°, 90°, 120°, 135°
Dimensions:	14.5 x 11 x 2.5 cm



## AZ-ES028

SET 4 MINI MAGNETIC WELDING POSITIONER 9LBS

Product type: Welding accessories.

Material:	Metal
Lifting capacity:	4.1 Kg
Angle:	45°, 90°, 135°
Dimensions:	7.2 x 4.3 x 1.1 cm



## AZ-ES029

ADJUSTABLE MAGNETIC WELDING POSITIONER 360° 50LBS

Product type: Welding accessories.

Material:	Metal
Lifting capacity:	22.5 Kg
Angle:	360°
Dimensions:	6.5 x 8.5 x 2.4 cm



## AZ-ES030

MAGNETIC WELDING POSITIONER RIGHT ANGLE 60LBS

Product type: Welding accessories.

Material:	A3 steel with chrome plating, NdFeB
Lifting capacity:	27.2 Kg
Angle:	30°, 60°, 90°, 120°, 150°
Dimensions:	84 x 54 x 14 cm



## AZ-ES031

MAGNETIC WELDING POSITIONER IN V 25LBS

Product type: Welding accessories.

Material:	A3 steel with chrome plating, NdFeB
Lifting capacity:	11.3 Kg
Angle:	60°, 90°, 120°
Dimensions:	84 x 54 x 14 cm



## AZ-ES032

MAGNETIC POSITIONER WELDING TABLE 200A 2" 10LBS

Product type: Welding accessories.

Material:	Metal
Dimensions:	2" (5.5)



**AZ-ES007**  
WELDING HELMENT  
WITH AUTOMATIC  
ADJUSMENT  
BY350F-ALOE

Product type: Welding masks.

View area:	90 x 35 mm
Welding arc sensors:	2
On / Off:	Automatic
UV/IR protection:	DIN16
Supply:	1x2032 battery type solar cells
Battery:	Lithium
Switching time:	1/15000 s
Sensitivity control:	Automatic
Dark/light delay time:	0.25 - 0.45 s Automatic
Cartridge size:	110 x 90 x 9 mm



**AZ-ES008**  
WELDING HELMENT  
WITH AUTOMATIC  
ADJUSMENT  
BY350E-ROSE

Product type: Welding masks.

View area:	90 x 35 mm
Welding arc sensors:	2
On / Off:	Automatic
UV/IR protection:	DIN16
Supply:	1x2032 battery type solar cells
Battery:	Lithium
Switching time:	1/15000 s
Shading control:	External button adjustment
Sensitivity control:	Automatic
Dark/light delay time:	0.25 - 0.45 s Automatic
Cartridge size:	110 x 90 x 9 mm



**AZ-ES009**  
WELDING HELMENT  
WITH AUTOMATIC  
ADJUSMENT  
BY433E-CENTAURY

Product type: Welding masks.

View area:	93 x 43 mm
Welding arc sensors:	2
On / Off:	Automatic
UV/IR protection:	DIN16
Supply:	1x2032 battery type solar cells
Battery:	Lithium
Switching time:	1/25000 s
Shading control:	External button adjustment
Sensitivity control:	Automatic
Dark/light delay time:	0.1 - 1.0 s Automatic



**AZ-ES027**  
WELDING GLASSES  
DIN16

Product type: Welding masks.  
New product!

View area:	9 x 3.4 mm
Welding arc sensors:	2
UV/IR protection:	DIN16
Switching time:	6/10000 s
Sensitivity control:	Ajustabil
Dark/light delay time:	DIN11 (DIN10-DIN13)
Light status:	DIN3
Come-back time:	0.2 s
Power battery:	Baterie litiu/alimentata cu energie solara-60 mAh
Material:	0.1 - 1.0 s Automatic
Dimensions:	10.8 x 5.1 x 0.55 mm

**Almaz**

2022



**AZ-ES019**  
WELDING WIRE  
0.8MM 0.5KG 30M

Product type: Consumables for welding.

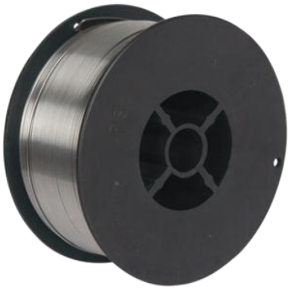
Length:	30 m
Thickness:	0.8 mm
Dimensions:	10 x 10 x 5 cm



**AZ-ES020**  
WELDING WIRE  
0.9MM 0.5KG 30M

Product type: Consumables for welding.

Length:	30 m
Thickness:	0.9 mm
Dimensions:	10 x 10 x 5 cm



**AZ-ES021**  
WELDING WIRE  
1.0MM 0.5KG 30M

Product type: Consumables for welding.

Length:	30 m
Thickness:	1.0 mm
Dimensions:	10 x 10 x 5 cm



**AZ-ES022**  
WELDING WIRE  
0.8MM 1KG 15M

Product type: Consumables for welding.

Length:	15 m
Thickness:	0.8 mm



**AZ-ES023**  
WELDING WIRE  
0.9MM 1KG 15M

Product type: Consumables for welding.

Length:	15 m
Thickness:	0.9 mm



**AZ-ES024**  
WELDING WIRE 1MM  
1KG 15M

Product type: Consumables for welding.

Length:	15 m
Thickness:	1.0 mm





### AZ-SE001

#### ROBOT CHARGER FOR VEHICLES 20-1550AH CD-630

Product type: Robot chargers and jump starters for vehicles.

Max. charging current:	12V - 60A; 24V - 90A
Capacity:	20-1550 Ah
Starting current:	12V - 360A; 24V - 550A
Tension:	220 - 240 V
Output voltage:	12 - 24 V
Supply cable length:	150 cm



### AZ-SE002

#### ROBOT CHARGER FOR VEHICLES 20-1200AH CD-430

Product type: Robot chargers and jump starters for vehicles.

Max. charging current:	12V - 45A; 24V - 60A
Capacity:	20-1200 Ah
Starting current:	12V - 230A; 24V - 330A
Charging cable:	10 mm x 1.2 m
Tension:	220 - 240 V
Output voltage:	12 - 24 V
Supply cable length:	150 cm



### AZ-SE003

#### JUMP STARTER VEHICLE BATTERY 30-300AH CB-50

Product type: Robot chargers and jump starters for vehicles.

Capacity:	30-300 Ah
Tension:	220 - 240 V
Output voltage:	12 - 24 V
Supply cable length:	150 cm



### AZ-SE004

#### JUMP STARTER VEHICLE BATTERY 30-250AH CB-30

Product type: Robot chargers and jump starters for vehicles.

Capacity:	30 - 250 Ah
Tension:	220 - 240 V
Output voltage:	12 - 24 V
Supply cable length:	150 cm



### AZ-SE005

#### JUMP STARTER VEHICLE BATTERY 30-150AH CB-10

Product type: Robot chargers and jump starters for vehicles.

Capacity:	5 - 150 Ah
Tension:	220 - 240 V
Output voltage:	12 - 24 V
Supply cable length:	150 cm



## AZ-EC004

### CONCRETE MIXER 160L 1000W HCM550

Product type: Concrete mixers.

Power kW/W:	1000 W/S6 30%
Drum volume:	160 l
Drum diameter drum loading:	380 mm
Drum rotation:	28 rpm
Transmission type:	Belt
Drum material:	Steel
Circle material:	Casting



## AZ-EC005

### CONCRETE MIXER 180L 1000W HCM650

Product type: Concrete mixers.

Power kW/W:	1000 W/S6 30%
Drum volume:	180 l
Drum diameter drum loading:	380 mm
Drum rotation:	28 rpm
Transmission type:	Belt
Drum material:	Steel
Circle material:	Casting



## AZ-EC001

### DRYWALL SANDER, FOLDABLE WITH VACUUM CLEANER AND LED 750W Ø225MM

Product type: Electric drywall sander with vacuum cleaner.

Power kW/W:	750 W
Sanding disc diameter:	Ø225 mm
Nominal no load speed:	1000 - 1600 rpm



## AZ-EC002

### DRYWALL SANDER WITH LED 750W Ø180MM

Product type: Electric drywall sander with vacuum cleaner.

Power kW/W:	750 W
Sanding disc diameter:	Ø190 mm
Nominal no load speed:	1000 - 1600 rpm



## AZ-EC006

### DRYWALL SANDER 750W Ø215MM FOLDABLE AND EXTENSIBLE

Product type: Electric drywall sander with vacuum cleaner.  
New product!

Power kW/W:	750 W
Sanding disc diameter:	Ø215 mm
Rotation:	1000 - 1600 rpm
Suction hose length:	4 m



## AZ-SE006

### LASER TELEMETER 0-40M OQ-40

Product type: Telemeters. New product!

Measurement interval:	0.3 - 40 m
Units:	m/in/ft
Laser type:	635 nm, <1mw
Measurement accuracy:	+/- 3 mm
Continuous measurement:	Yes
Area measurement:	Yes
Pythagoras indirect measurement:	Yes
Revision:	20 measurements
Battery type:	AAA (2 x 1.5 V)
Laser automatic stop:	60 s



## AZ-SE007

### LASER TELEMETER 0-60M OQ-60

Product type: Telemeters. New product!

Measurement interval:	0.3 - 60 m
Units:	m/in/ft
Laser type:	635 nm, <1mw
Measurement accuracy:	+/- 3 mm
Continuous measurement:	Yes
Area measurement:	Yes
Pythagoras indirect measurement:	Yes
Revision:	20 measurements
Battery type:	AAA (2 x 1.5 V)
Laser automatic stop:	60 s



## AZ-D001

### GASOLINE CHAINSAW MAGNESIUM STARTER KP-5800

Product type: Chainsaws 2T engines

Power kW/HP:	2.2 kW/2.95 HP
Engine type:	2T with sole cylinder
Displacement:	58 cc
Maximum speed:	3200 rpm
Fuel:	Gasoline
Fuel tank capacity:	600 ml
Oil tank capacity:	260 ml
Blade length:	400 mm
Blade/chain pitch:	0.325
Start system:	Manual (starter)



## AZ-D002

### GASOLINE CHAINSAW MAGNESIUM STARTER OUL-5800

Product type: Chainsaws 2T engines

Power kW/HP:	2.2 kW/2.95 HP
Engine type:	2T with sole cylinder
Displacement:	58 cc
Maximum speed:	3200 rpm
Fuel:	Gasoline
Fuel tank capacity:	600 ml
Oil tank capacity:	260 ml
Blade length:	400 mm
Blade/chain pitch:	0.325
Start system:	Manual (starter)

**AImaz**

2022

The information contained in this brochure is of a general presentation and may contain errors due to processing or subsequent changes by the manufacturers. Pictures may not reflect the final shape or color of the product. All products comply with current EC regulations and are available through the GOLDEN FISH SRL distribution network.

# **Almaz**

---

Mobile: 0374.496.580  
[www.micul-fermier.ro](http://www.micul-fermier.ro)  
[contact@micul-fermier.ro](mailto:contact@micul-fermier.ro)